

Accessing Innovation in the US

For the month of January, the Nasdaq 100 Index (NDX) returned 10.7%, outperforming the S&P 500 Index, which returned 6.3%. Investors turned back to equities for January as optimism for a “soft landing” of the economy grew, and potential for the slowing pace of rate hikes from the Federal Reserve (Fed) started to get priced into the market. The start of 2023 was much different from 2022, where the S&P 500 was down 5.17%.

US inflation, as measured by CPI (Consumer Price Index), continued its downward trend and printed its first negative month-over-month reading since May 2020. The -0.1% month-over-month reading met analysts' expectations. The year-over-year reading was reported at 6.5%, lower than the previous reading of 7.1% and the lowest print since November 2021. Energy and commodities were the largest contributors to the drop in year-over-year inflation and the cost of food declined slightly while the cost of services continued to rise. The continued decline of CPI and PCE (Personal Consumption Expenditures) gave hope to investors that this may lead to fewer rate hikes from the Fed and was additive to the bullish sentiment seen during the month.

The Bureau of Labor Statistics also released an updated unemployment rate at the beginning of January which came in at 3.5%, lower than the previous revised number of 3.6%. Despite ongoing layoffs that have predominately been in large tech-focused companies, US initial jobless claims did not see a significant spike in January. Investors have continued to wait for an increase in unemployment numbers as the Fed had signalled higher unemployment as a side effect of the rate hikes. The ongoing strength in the labor market continued to give hope that a soft landing is achievable. It also has the potential to support future Fed decisions to increase the target rate to continue their fight against inflation.

Fed futures illustrated by Bloomberg showed that investors believed there was potential for the FOMC to have its first rate cut this cycle in the second half of this year. This could be another catalyst for the positive market action observed in January.

Index performance

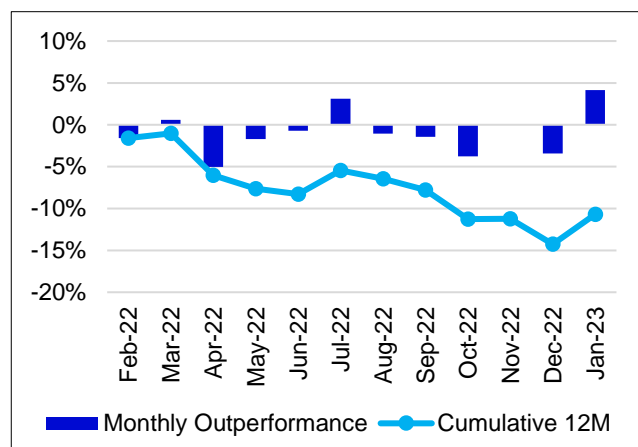
	1 Month	YTD	1 Year	10 Years (CAGR)
NASDAQ-100	10.7%	10.7%	-18.4%	16.9%
S&P 500	6.3%	6.3%	-8.7%	12.0%
Relative	4.1%	4.1%	-10.7%	4.4%

Source: Bloomberg as of 31 Jan 2023.

Past performance may or may not be sustained in future.

Disclaimer: Returns less than 1 year are absolute returns and more than 1 year are Compounded Annualized Growth rate (CAGR) for Benchmark Indices. The same are for the illustration purpose only and should not be construed as investment advice. It does not in any manner imply or suggest the performance of any schemes of Invesco Mutual Fund.

Monthly performance Nasdaq-100 vs. S&P 500



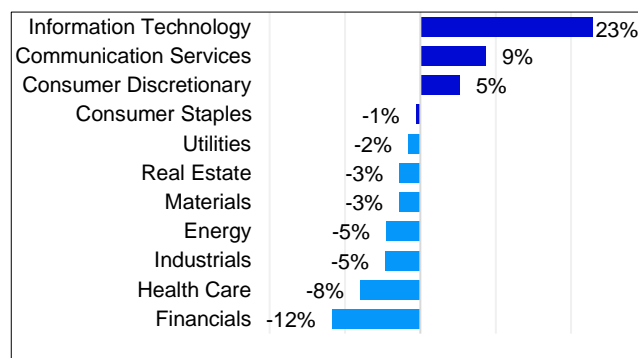
Source: Bloomberg as of 31 Jan 2023.

Past performance may or may not be sustained in future.

Disclaimer: The above returns are absolute returns for Benchmark Indices and the same are for the illustration purpose only. It should not be construed as investment advice. It does not in any manner imply or suggest the performance of any schemes of Invesco Mutual Fund.

Sector weightings Nasdaq-100 vs. S&P 500

Whilst the Nasdaq-100 specifically excludes Financials (incl. Real Estate), it also currently offers no exposure to Materials or Energy



Source: Invesco, FactSet, as of 31 Jan 2023 Data in USD

Disclaimer: The sectors referred above should not be construed as recommendations, advice to buy, sell or in any manner transact in the sector and neither should it be considered as Research Report from Invesco Asset Management (India) Private Limited and/or Invesco Mutual Fund.

Nasdaq 100 Performance Drivers

January performance attribution of the Nasdaq 100 vs. the S&P 500 Index

For the month of January, the Nasdaq 100 Index returned 10.7%, outperforming the S&P 500 Index which returned 6.3%. Consumer discretionary, Communication services, and Information Technology were NDX's best performing sectors and returned 22.9%, 14.1% and 9.8%, respectively. The Utilities sector was the only negative contributor to performance with a return of -1.6%.

NDX's outperformance vs. the S&P 500 was largely driven by its overweight exposure and differentiated holdings in the Consumer Discretionary, Information Technology, and Healthcare sectors. Lack of exposure to Materials, Real Estate, and Financials detracted slightly from the index's relative performance vs. the S&P 500.

January Attribution: Nasdaq 100 vs. S&P 500

Nasdaq 100	Nasdaq 100				Nasdaq 100 vs S&P 500 Attribution		
	Average Weight (%)	Avg Wt Difference vs S&P 500 (%)	Sector Return (%)	Sector Contribution (%)	Allocation Effect (%)	Selection Effect (%)	Total Effect (%)
(%)							
Real Estate	N/A	-2.76	N/A	N/A	-0.10	N/A	-0.10
Materials	N/A	-2.79	N/A	N/A	-0.07	N/A	-0.07
Financials	N/A	-11.74	N/A	N/A	-0.07	N/A	-0.07
Industrials	3.86	-4.66	2.27	0.09	0.12	-0.06	0.06
Utilities	1.38	-1.71	-1.61	-0.02	0.15	0.00	0.15
Consumer Staples	6.40	-0.55	1.33	0.09	0.04	0.15	0.19
Energy	0.49	-4.66	7.19	0.04	0.17	0.02	0.19
Communication Services	16.49	8.89	14.07	2.34	0.71	-0.07	0.65
Health Care	7.08	-8.18	1.17	0.11	0.70	0.24	0.94
Information Technology	49.44	23.43	9.79	4.82	0.71	0.24	0.95
Consumer Discretionary	14.86	4.74	22.85	3.22	0.41	1.08	1.49
Total	100.00	--	10.67	10.67	2.77	1.61	4.38

Source: Invesco, FactSet, as of 31 Jan 2023 Data in USD.

Past performance may or may not be sustained in future.

Disclaimer: The returns shown are absolute returns. The sectors referred above should not be construed as recommendations, advice to buy, sell or in any manner transact in the sector and neither should it be considered as Research Report from Invesco Asset Management (India) Private Limited and/or Invesco Mutual Fund.

January's Top Contributors/Detractors relative to the S&P 500

Top Contributors (% of total net assets)			Top Detractors (% of total net assets)		
Company	Weight	1 Month Return	Company	Weight	1 Month Return
Amazon	6.43%	22.77%	Microsoft	11.93%	3.33%
Nvidia	3.65%	33.69%	PepsiCo	2.12%	-5.34%
Tesla	2.79%	40.62%	Amgen	1.24%	-3.90%

Source: Bloomberg, as of 31 Jan 2023. Top and bottom performers for the month by relative performance.

Past performance may or may not be sustained in future.

Disclaimer: The above returns are absolute returns. The stocks referred above should not be construed as recommendations, advice to buy, sell or in any manner transact in the stocks and neither should it be considered as Research Report from Invesco Asset Management (India) Private Limited and/or Invesco Mutual Fund.

Historical Performance

	Jan-13 to Jan-14	Jan-14 to Jan-15	Jan-15 to Jan-16	Jan-16 to Jan-17	Jan-17 to Jan-18	Jan-18 to Jan-19	Jan-19 to Jan-20	Jan-20 to Jan-21	Jan-21 to Jan-22	Jan-22 to Jan-23	2022	2020 to 2022
NASDAQ-100												
Net Total Return Index	30.2%	18.8%	4.0%	20.6%	36.9%	0.1%	31.2%	44.6%	16.1%	-18.4%	-32.6%	27.4%
S&P 500 Net Total Return Index	20.8%	13.5%	-1.3%	19.3%	25.7%	-2.9%	21.0%	16.6%	22.8%	-8.7%	-18.5%	23.0%

Source: Invesco, Bloomberg, as of 31 Jan 2023. Data in USD.

Past performance may or may not be sustained in future.

Disclaimer: The above returns are absolute returns for Benchmark Indices. The same are for the illustration purpose only and should not be construed as investment advice. It does not in any manner imply or suggest the performance of any schemes of Invesco Mutual Fund.

This document alone is not sufficient and shouldn't be used for the development or implementation of an investment strategy. It should not be construed as investment advice to any party. All figures, charts/graphs and data included in this document are as on date and are subject to change without notice. The data used in this document is obtained by Invesco Asset Management (India) Private Limited from the sources which it considers reliable. While utmost care has been exercised while preparing this document, Invesco Asset Management (India) Private Limited does not warrant the completeness or accuracy of the information and disclaims all liabilities, losses and damages arising out of the use of this information. The content of this document is intended solely for the use of the addressee. If you are not the addressee or the person responsible for delivering it to the addressee, any disclosure, copying, distribution or any action taken or omitted to be taken in reliance on it is prohibited and may be unlawful. The recipient(s) before acting on any information herein should make his/her own investigation and seek appropriate professional advice.

Mutual Fund investments are subject to market risks, read all scheme related documents carefully.